



Training and Inference on Any-Order Autoregressive Models the Right Way

Andy Shih, Dorsa Sadigh, Stefano Ermon

andyshih@cs.stanford.edu

Joint Likelihood

Autoregressive Model

Marginal Likelihood

Any-Order Autoregressive Model

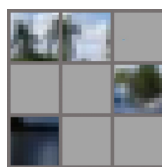
$$\log p(\mathbf{x}) = \sum_{i=1}^N \log p(x_i | \mathbf{x}_{<i})$$

joint

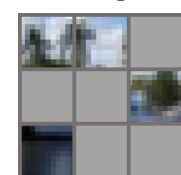
univariate conditional

$$\log p(\mathbf{x}_e)$$

marginal

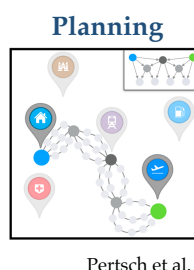


Image



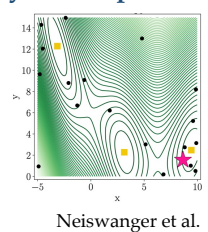
Language

l_l_e_o_l_y_s_r_t_s



Pertsch et al.

Bayesian Optimization



Neiswanger et al.

Probabilistic Programming

```
maximize f(x), 10) -> <maximize>
x1 = 0(2*max, 5) -> <maximize>
x2 = 0(5*max, 2) -> -1.18
x3 = 0(1, 1) -> -0.81
x4 = 0(2, 1) -> <maximize>
```

Wu et al.

and more...

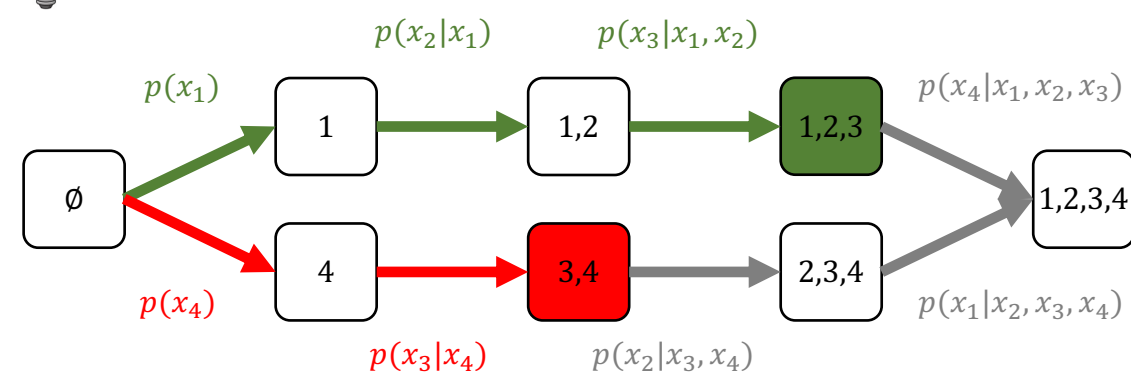
Difficulty: The evidence subset is different for each query!

$$p(x_1, x_3) = \int_{x_2} \int_{x_4} p(x_1, x_2, x_3, x_4) dx_2 dx_4$$

high-dimensional integration over missing variables



compute marginals via chain rule!



log p(x_{1:3}) = log p(x₁) + log p(x₂|x₁) + log p(x₃|x₁, x₂)

log p(x_{3:4}) = log p(x₄) + log p(x₃|x₄)

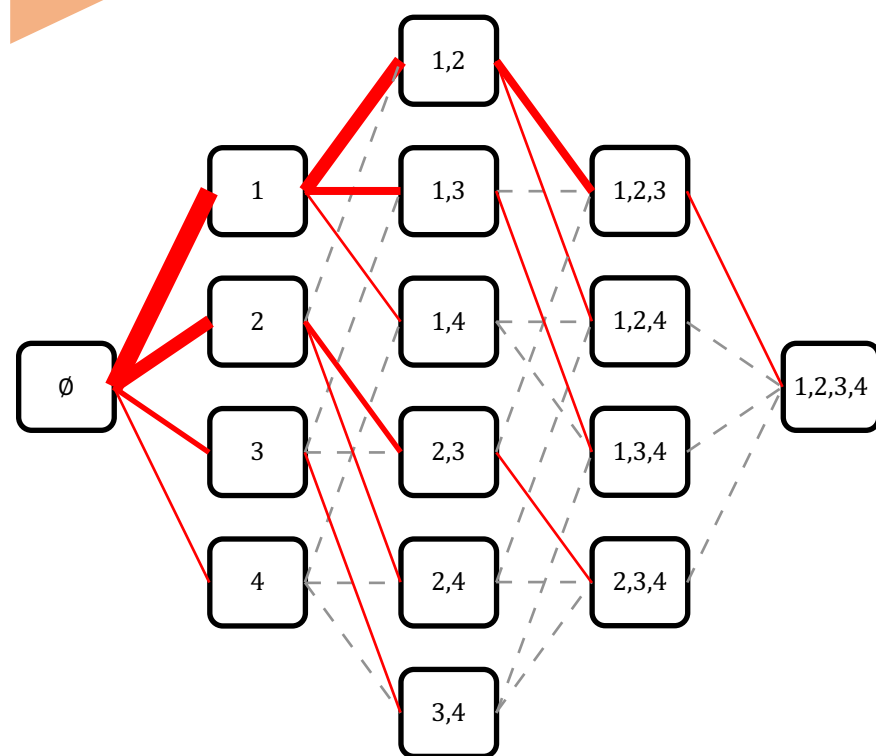
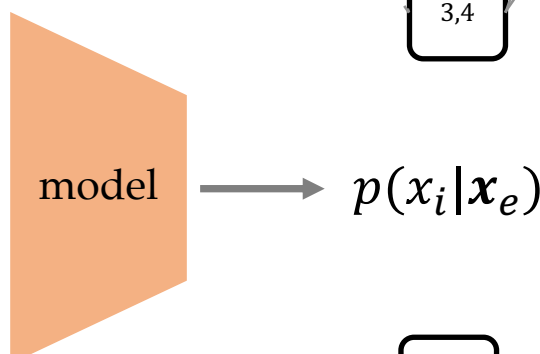
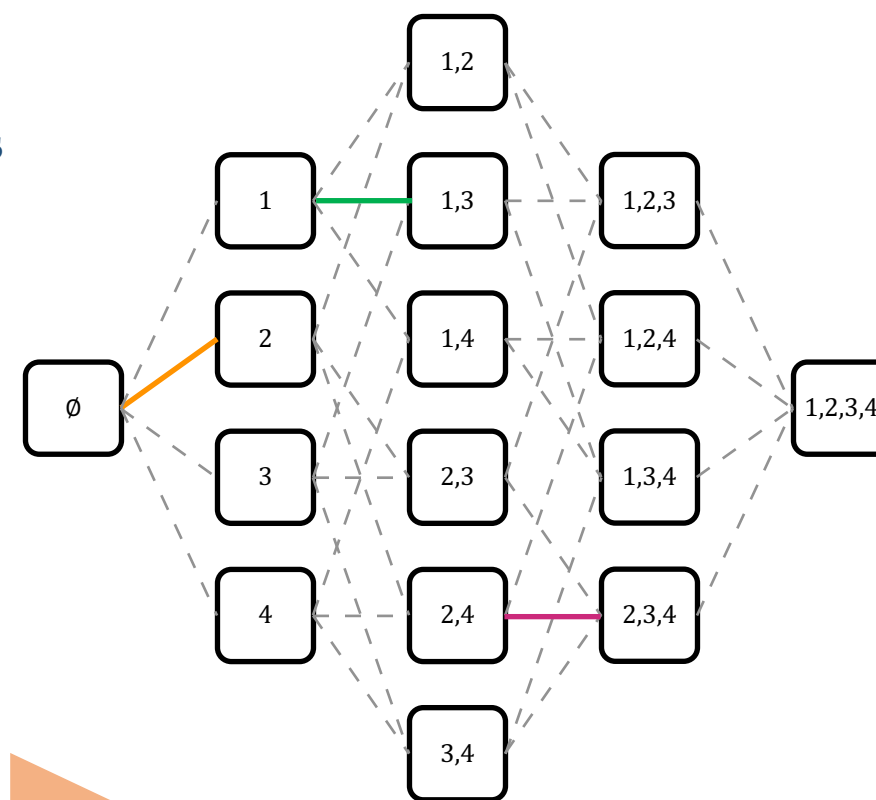
Any-Order Autoregressive Models learn all orderings

p(x₃|x₂, x₄)
p(x₃|x₁)
p(x₂|x_∅)

All univariate conditionals (edges) learned with a single weight-tied neural network

Input x

Mask e



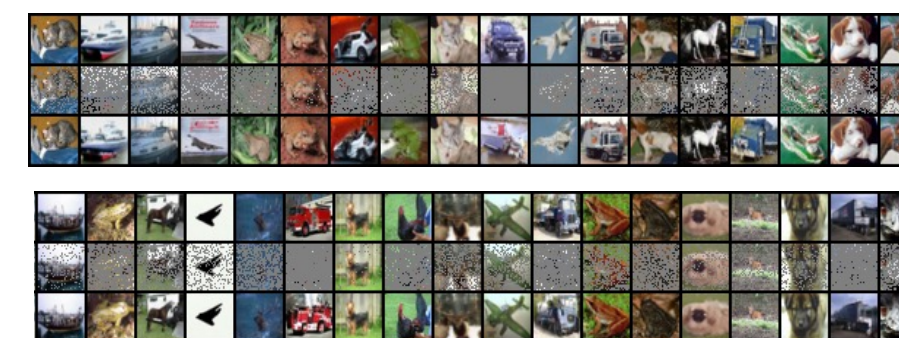
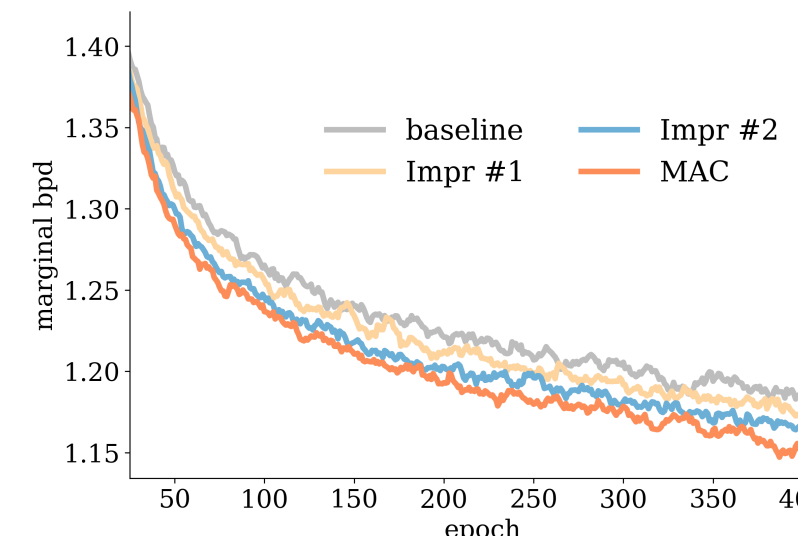
MAC: Mask-Tuned Arbitrary Conditional Models

Two improvements:

- 1 For each node, we only need one path from ∅
- Only need the red edges!
- 2 Some edges will be evaluated more frequently!

Text8 dataset (bpd, lower is better)

	joint	marginal
OA-Transformer	1.64	
D3PM	1.47	
ARDM (14000 epochs)	1.43	
ARDM (3000 epochs)	1.48	1.12
MAC (3000 epochs)	1.40	1.09



prophylactic drugs several drugs most of which are also used for treatment of malaria can be taken preventatively generally these drugs are taken daily or weekly at a lower dose than would be used for treatment of a person who had actually contracte

pr_p_y_cti_dr_s_eve_l drug_o_t of_h_h are_so ued_rr_re_tment_f mal_i_c_b_a_en_re_enta_vely ge_ra_l_tes_dugs_are_ake_aily or_ee_ly_t a lo_er dose_t_n_o_ld_e_used_fr_re_tme_t_f_e_on_w_ada_tuall_on_rate

prophylactic drugs several drugs most of which are also used for treatment of malaria can be taken preventatively generally these drugs are taken daily or weekly at a lower dose than would be used for treatment of a lesion who had actually contracte

